



DESCRIPTION OF THE TECHNICAL FEATURES

BASE FRAME

High-quality tubular and sheet steel structure bolted onto the vehicle chassis. The frame has 4 stabilizer feet, the front two of which have an 'A'-shaped assembly, and the rear two of which are mounted on telescopic arms that extend manually (the machine can be used with the arms of the rear stabilizers retracted or extended). The frame is completed with a non-slip aluminium work platform with side access ladder and any optional features requested.

ARM-BEARING TURRET

Made of high-quality sheet steel connected to the column. Made of heavy-duty sheet steel that rotates on bushes with a low friction coefficient, it is driven by a hydraulic motor coupled with a worm screw connected to the ring that is integral with the frame.

ARM

Telescopic with hydraulic extension with driving gear, made of die-formed and welded sheet steel with extremely high yielding limit. The arm has an operating range of - 25° to + 80° in relation to the horizontal and is articulated to enable it to go over high obstacles. The tower is articulated as a pantograph and is driven by a hydraulic cylinder that enables the telescopic arm to work at a great height.

OPERATORS' PLATFORM

Built entirely of aluminium. Equipped with 2 generously proportioned side openings that make it easy for operators to access the platform. These openings are guarded by bars that close through the force of gravity.

PLATFORM LEVELLING

It uses a hydraulic pantograph system with two cylinders in phase that is able to rephase the horizontal condition manually.



CONTROLS

Equipment provided with completely hydraulic command and control system.

Stabilization: by hydraulic distributor with independent or simultaneous operation of the stabilizers located at the frame level.

Superstructure: the commands are located in two positions- on the rotatable turret and on the platform. They use sensitized proportional hydraulic distributors that are able to perform several operations simultaneously. The electric power panel is located in the platform control position and comprises the various consent and alarm warning lamps, the emergency button and the motor starter switch

STANDARD SAFETY DEVICES

- Hooks for safety belts
- Arm stop with non-stabilized machine
- Stabilizers stop with machine open
- Device on self-locking rotation
- Use and maintenance manual
- Manual pump for emergency descent
- Max. valve on hydraulic circuit
- Thermal overload protection on electrical system
- Work area automatic selector (extended or reduced stabilization)
- Stop valves on all cylinders

SERIALLY MOUNTED ACCESSORIES

- Vehicle engine switched on and off from the control panel on the ground and from the platform
- 2 safety belts
- Device warning that stabilizers are not at rest (vehicle dashboard)
- Hydraulic rotation of platform
- 220 VDC monophase electric power socket on platform with differential switches
- Power ON warning lamp (vehicle dashboard)



FEATURES AND PERFORMANCE

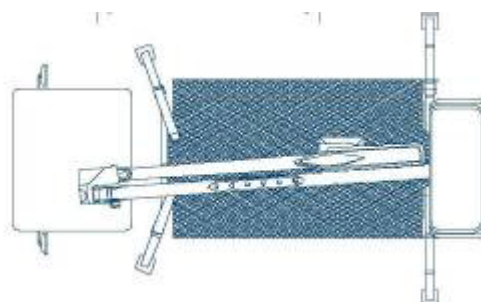
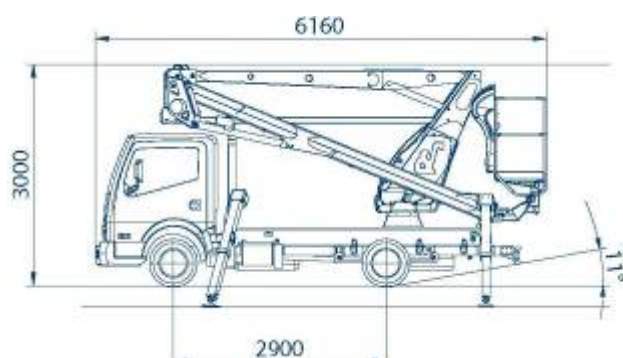
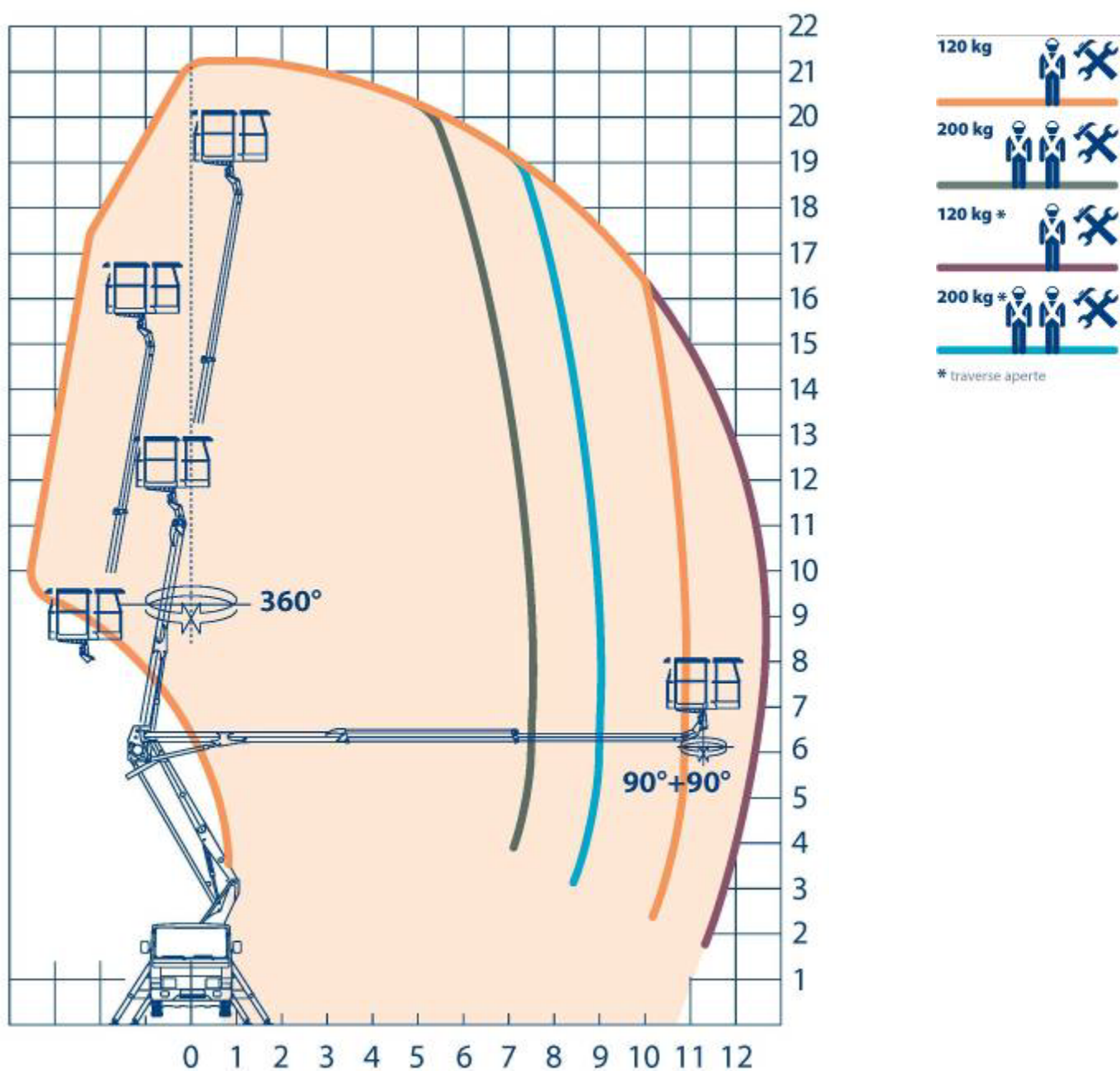
| | |
|--|---|
| Max. operating height | 21 m/2 operators |
| Max. operating outreach | 12 m/1 operator |
| Maximum capacity | 120-200 kg/1-2 operators |
| Dimensions of aluminium operator platform | 1400 x 700 x h 1100 mm |
| Controls | Hydraulic |
| Turret rotation | 360° |
| Operator-platform rotation | 90° right + 90° left |
| Stabilization | 2 A-type front boxed stabilizers + 2 boxed stabilizers on extendible crossbeams |
| Machine length | 6,160 mm |
| Max. height | 3,000 mm |
| Machine width | 2,100 mm |
| Minimum permitted total weight for installation | 3.5 tonnes |

OPTIONALS AVAILABLE ON REQUEST

- 12 V AC single-phase electric power socket on platform
- 60 W spotlight on platform powered by batteries
- Custom stickers on boom (customer logo-send .jpg file)
- Yellow rotating lamp with magnetic fixture
- Double yellow rotating lamp for street signal on truck
- Double yellow rotating lamp mounted on truck cab
- Fibreglass platform instead of standard version, dim. 700 x 1400 x h 1100 mm
- Fibreglass platform instead of standard version, dim. 700 x 1400 x h 1100 mm with 1000 V insulated
- Heat exchanger
- Non-standard paintwork (RAL 9016 white)
- Non-standard paintwork for cold climate (RAL 9016 white)
- Paintwork for cold climate (RAL 9016 white)
- Extra paintwork for truck cab
- Parabike – lateral protection for truck, on Nissan-Renault with tool box
- Platform waxing for sea transport
- Pneumatic power line to platform with quick couplings
- Retroreflective stripes white/red for truck
- Small diesel tank – instead of standard –



OPERATING AREA AND GEOMETRICAL FIGURES



OIL&STEEL SPA

Via Verdi 22
41018 San Cesario Sul Panaro
Modena - Italy

subject to management and coordination
of PM Group spa, a company with a sole director
Registered with Companies Register of Modena as R.E.A. 282202
Tel. +39 059 936811 Fax +39 059 936413

SHARE CAPITAL €362,400.00, fully paid up
TAX CODE/VAT NUMBER 02313650364
www.oilsteel.com - info@oilsteel.com